



the
brewhouse
arts centre & café bar

The Brewhouse Auditorium Technical Specifications Pack

 Brewhouse Arts Centre  @Brewhousecentre  @Brewhouseartscentre  Brewhouse Arts

a : Brewhouse Arts Centre, Union Street, Burton upon Trent, Staffordshire, DE14 1AA
e : brewhousearts@eaststaffsbc.gov.uk box office : 01283 508 100

www.brewhouse.co.uk

Welcome,

This auditorium technical specifications pack is provided to assist hirers and potential hirers in planning their event.

Use of all the facilities listed is included in the venue hire, but only under the direct supervision of Brewhouse Technical Staff.

If you have any questions or require further information or advice in planning your event, please contact the Technical Manager.

Matt Bancroft

Brewhouse Technical Manager

Email: matt.bancroft@eaststaffsbc.gov.uk

Phone: 01283 508100

The Brewhouse



Get in

Access for loading and unloading is via Duke Street (**SatNav: DE14 1EB**) into the Brewhouse loading bay.

Flat access for small to medium Transit/HGV's backing onto ramped stage dock.

Dock door is a **2.7m Width x 2.5m Height** roller shutter followed by hinged double doors for direct access onto stage.

Please note: there are no long term parking spaces available on site, leaving vehicles in the loading bay is by prior arrangement with the Technical Manager only. Pay and Display parking is available in adjacent town centre car parks.

Auditorium

Raked seating for Black Box stage

Maximum capacity = **233**

Retracted seating for Open Auditorium

Maximum capacity = **400 (Standing)**

Stage

Black Box

Stage floor is flat and level to front row of auditorium and is covered by a permanent Black Harlequin multipurpose dance floor up to Stage Setting Line.

Open Auditorium

Stage floor can be raised up to a height of 900mm by use of a modular staging system such as Steeldeck or StageDex. Additional charges may apply.

Dimensions

Maximum Stage Playing Area Width = **7.3m (24')**

Maximum Stage Playing Area Depth = **6m (21')** (**4.5m (16')** on Steeldeck)

Stage Left Wing Width = **5m**

Stage Right Wing Width = **4m**

Upstage Crossover Depth = **2m**

Flat Stage Floor to Underside of LX Bars/Tab Tracks = **5.5m (18')**

Floor to Ceiling of Crossover/Wings = **2.8m (9'6")**

Stage Setting Line to Rear of Auditorium = **24m**

Please note: screwing into or painting on the stage floor is not permitted.

Rigging

5x Motorised Winch LX bars, each with a **250kg SWL**.

2x Fixed Booms DS of Main House Curtain.

10x Fixed Curtain Tracks, with weighted floor pulleys from stage left wing.

1x Fixed 48mm Cyclorama Lighting Bar.

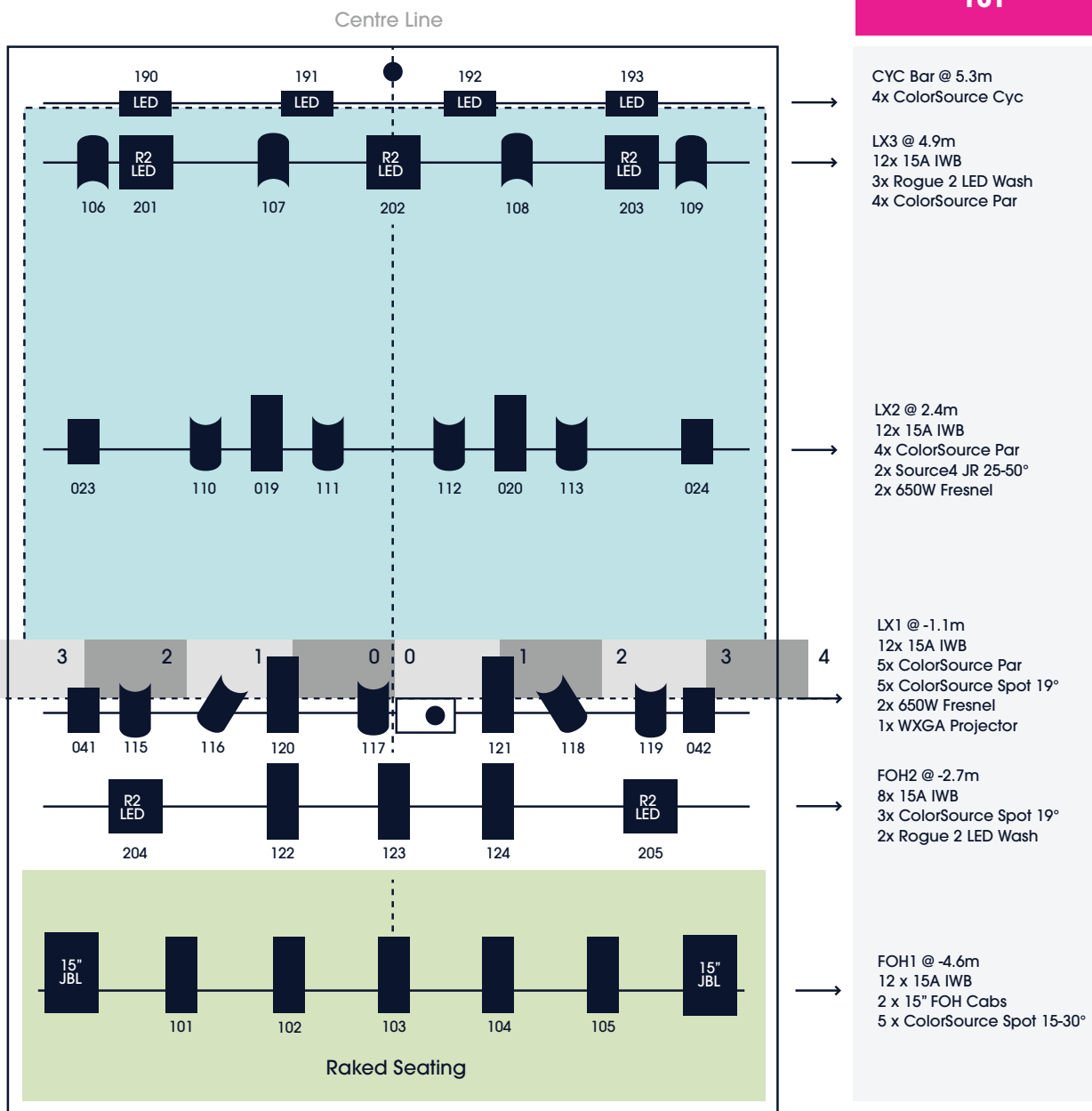
1x 3 line Manual Hemp Set with a **50kg SWL** at rear of stage.

1x 2 line tumbler roller for Cyclorama at rear of stage.

Please note: all bars should have evenly distributed loads and that they are not suitable for live flying.

Brewhouse Auditorium Generic Rig Plan

Channel Number 101



Drapery (NFDR)

Main House Curtain

Red Velour Drape on Traveller.

Stage Masking

4x Black Wool Serge Drapes on Travellers.
12x Black Wool Serge Legs from curtain tracks.
10x Black Wool Serge Legs from ceiling in wings.

Cyclorama

1x White Canvas Cyclorama on tumbler roller.

Lighting

Lighting Control

ETC Ion Xe 20 Console
6x ETC ColorSource DMX Relay
2x Swisson DMX Splitter

Circuits

Total Number of Stage Lighting Circuits: 100 (all **15A sockets**)
Total Number of Stage Lighting Dimmers: 44 (all **max. 2.4 kW**)

Dimmer Channel Assignment

FOH1 + FOH2 = 1-12, LX1 + Booms & Dips = 31-44, LX2 + LX3 = 13-30

Fresnels (with Gel Frames and Barn Doors)

6x Teatro Comma Fresnel 650W
4x Strand 223/764 Fresnel 1kW

Profiles

5x ETC ColorSource LED Spot with 19° EDT Lens
5x ETC ColorSource LED Spot with 15°-30° Zoom Lens (B size Gobo holders)
4x ETC Source Four Jr 575W 25°-50° Zoom Lens (M size Gobo holders)

Parcans & Floods

15x ETC ColorSource LED Par
4x ETC ColorSource LED Cyclorama Flood (**Fixed position**)

Movers

5x Chauvet Rogue 2 LED RGBW Wash (**Fixed position**)

Sound

Mixing Desk

Yamaha LS9-16 Channel Digital Mixing Console

Speakers & Speaker Management

2x JBL PRX415 Full Range 15" Speaker
2x JBL PRX412 Full Range 12" Speaker
2x JBL PRX418S 18" Subwoofer
2x JBL PRX412M 12" Monitor Speaker
2x JBL Control 25 5¼" Delay Speaker
1x dbx DriveRack PA+ System Controller
3x Crown XLS2000 Power Amplifier (Full Range & Monitors)
1x Crown XLS2500 Power Amplifier (Subwoofers)
1x Crown XLS602 Power Amplifier (Delays)

Playback

Mac Mini running OSX 10.14 and QLAB (V4)
MD/CD/MC players available on request

Microphones & DI

4x Sennheiser Evolution G2 Series Wireless Microphones
(2x Handheld or 4x Belt pack available) (Ch. 70 – Licence Free)
4x Sennheiser Evolution G3 Series Wireless Microphones
(4x Belt pack available) (Ch. 38 - Licensed)
3x Shure SM58 Vocal
3x Shure SM57 Instrument
1x Shure Beta52 Bass
4x Behringer Ultra-DI DI100

Piano & Keys

Yamaha G3 Baby Grand Piano (Tuning charge may apply)
Yamaha Keyboard

Hearing Loop

Sennheiser SZI 1015-T Infra-red Assistive Listening System
Facility for audio description from control room.

Please note: the standard FOH mixing position is located in the control room at the rear of the auditorium. Please contact the Technical Manager well in advance of arrival if you need an in house mixing position. The Auditorium PA system is rigged and calibrated for the seated "Black Box" configuration and would likely need supplementing to be suitable for use in the "Open Auditorium" configuration, recommendations of excellent local PA companies can be provided on request.

AV & Effects

Video

Panasonic PT-VZ585N WXGA Projector – 5000 ANSI Lumen
Unicol Projector mount for PT-VZ585N

Smoke and Effects

Martin Magnum 800 Smoke Machine with remote control
Le Maitre MVS DMX Hazer

Additional Power

1x 32A Single Phase
1x 63A Single Phase

We have no 32A or 63A cables or converters

Stage Management

Comms

Canford Tecpro PS711 Power Supply
3x Canford Tecpro Belt Packs with Single Muff Headsets.
Dressing Room and FOH paging system located in control room.

Dressing Rooms

2 Large dressing rooms located stage left; both have toilet and shower facilities, costume rails, a kettle, an iron and an ironing board. Refrigerator located in first dressing room. Show relay and video relay available in both. Each dressing room has a maximum capacity of 20 Adults.

If additional capacity is required, extra rooms located above the stage can be hired on request (subject to availability).

If you have any technical questions please contact:

Matt Bancroft

Brewhouse Technical Manager

Email: matt.bancroft@eaststaffsbc.gov.uk

Phone: 01283 508100